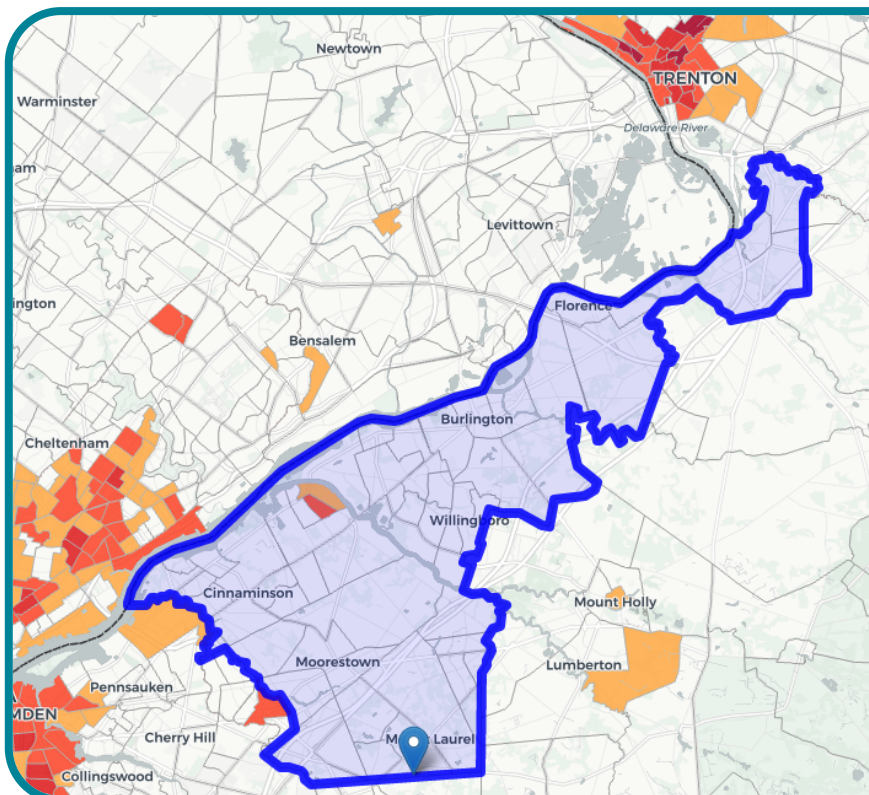


New Jersey Legislative District 7

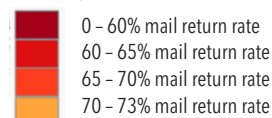
New Jersey Legislative District 7 had a total of **4,910** people living in “hard-to-count” (HTC) census tracts—or areas where a low percentage of residents completed and returned their most recent census questionnaire. This number equates to a total of **2%** of the district’s total population.

Total population	222,561
Population living in HTC areas	4,910
Percentage living in HTC areas	2%



Hardest to Count (HTC)

Tracts with 2010 mail return rates of 73% or less (in the bottom 20 percent of return rates nationwide) are shaded on the map. Tracts with >73% return rate are not displayed.



Source: CUNY Mapping Service at the Center for Urban Research, CUNY Graduate Center. Retrieved from <https://www.censushardtcountmaps2020.us/>.

The Census has low response rates in some areas and among certain population groups, who are at risk of being undercounted. Some of these hard-to-count population groups include certain racial and ethnic minority groups and children under age 5. For example, of all children under age 5 living in Legislative District 7, **3%** lived in areas at greatest risk of undercount.



● Demographic Groups Living in Hard-to-Count Areas

Demographic Group	Number Living in HTC Areas	Percentage Living in HTC Areas
Black or African American	770	1%
Hispanic or Latinx	678	5%
Asian	59	0%
Children Under Age 5	360	3%

Some parts of New Jersey have a greater proportion of hard-to-count census areas than others. The chart below shows the municipalities in District 7 with at least one hard-to-count census tract.

● Municipalities with at Least One Hard-to-Count Area (Total Population ≥ 5,000)

Municipality	HTC Population	% Total Population Living in HTC Areas	% Black or African American Living in HTC Areas*	% Hispanic or Latinx Living in HTC Areas*	% Asian Living in HTC Areas*	% Children Under Age 5 Living in HTC Areas*
Riverside	4,910	61%	80%	77%	71%	79%

**Hard-to-count demographic sub-group populations out of total sub-group populations.*

● Data Sources:

U.S. Census Bureau, 2010 decennial census and 2016 American Community Survey Estimates, with assistance from the CUNY Mapping Service, Center for Urban Research, CUNY Graduate Center. Certain municipalities extend across multiple legislative districts.