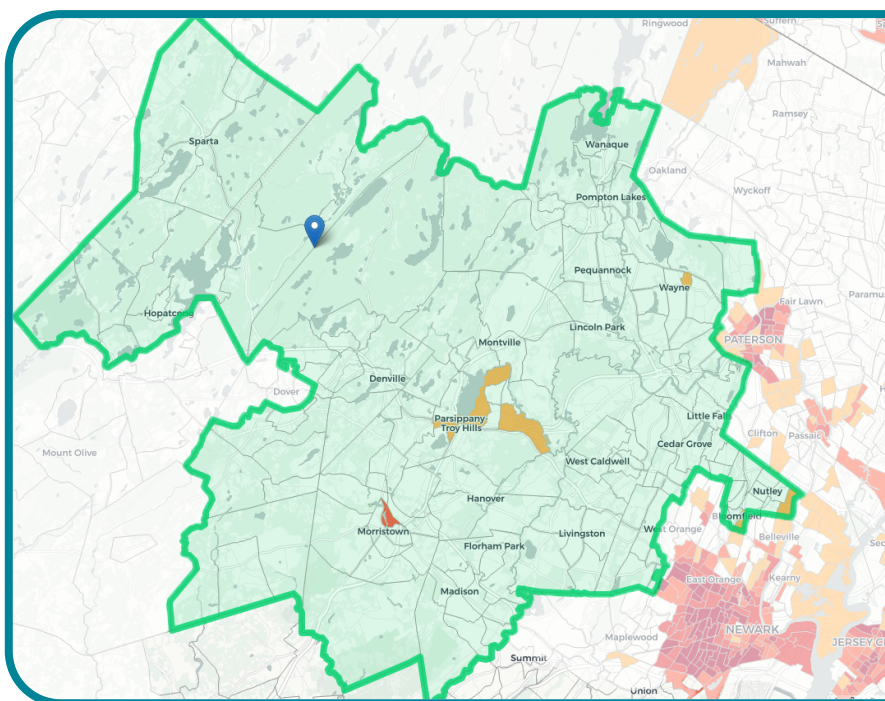


New Jersey Congressional District 11

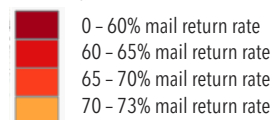
New Jersey Congressional District 11 had a total of **29,023** people living in “hard to count” (HTC) census tracts—or areas where a low percentage of residents completed and returned their most recent census questionnaire. This number equates to a total of **4%** of the district’s total population.

Total population	738,734
Population living in HTC areas	29,023
Percentage living in HTC areas	4%



Hardest to Count (HTC)

Tracts with 2010 mail return rates of 73% or less (in the bottom 20 percent of return rates nationwide) are shaded on the map. Tracts with >73% return rate are not displayed.



Source: CUNY Mapping Service at the Center for Urban Research, CUNY Graduate Center. Retrieved from <https://www.censushardtocountmaps2020.us/>.

The Census has low response rates in some areas and among certain population groups, who are at risk of being undercounted. Some of these hard to count population groups include certain racial and ethnic minority groups and children under age 5. For example, of all children under age 5 living in Congressional District 11, **4%** lived in areas at greatest risk of undercount. Census 2020 will be the first time that the Census is conducted using internet responses in addition to mail-in and in-person responses. As a result, households with no or limited internet access may also be at risk of not being counted.



Demographic Groups Living in Hard-to-Count Areas

Demographic Group	Number Living in HTC Areas	Percentage Living in HTC Areas
Black or African American	2,794	8%
Hispanic or Latinx	5,781	7%
Asian	7,587	9%
Children Under Age 5	1,517	4%
Households with Limited or No Internet Access	22,045	8%

Some parts of New Jersey have a greater proportion of hard to count census areas than others. The chart below shows the municipalities in District 11 with at least one hard to count census tract.

Municipalities with at Least One Hard-to-Count Area (Total Population ≥ 5,000)

Municipality	HTC Population	% Total Population Living in HTC Areas	% Black or African American Living in HTC Areas*	% Hispanic or Latinx Living in HTC Areas*	% Asian Living in HTC Areas*	% Children Under Age 5 Living in HTC Areas*
Bloomfield	14,691	31%	46%	42%	29%	34%
Parsippany-Troy Hills	12,902	24%	36%	21%	28%	20%
Montclair	11,287	30%	49%	41%	16%	23%
Nutley	6,635	23%	24%	26%	39%	38%
West Orange	4,789	10%	14%	24%	5%	15%
Morristown	3,669	20%	34%	38%	7%	17%
Wayne	2,944	5%	4%	7%	12%	3%

*Hard-to-count demographic sub-group populations out of total sub-group populations.

Data Sources:

U.S. Census Bureau, 2010 decennial census and 2016 American Community Survey Estimates, with assistance from the CUNY Mapping Service, Center for Urban Research, CUNY Graduate Center. Certain municipalities extend across multiple congressional districts.